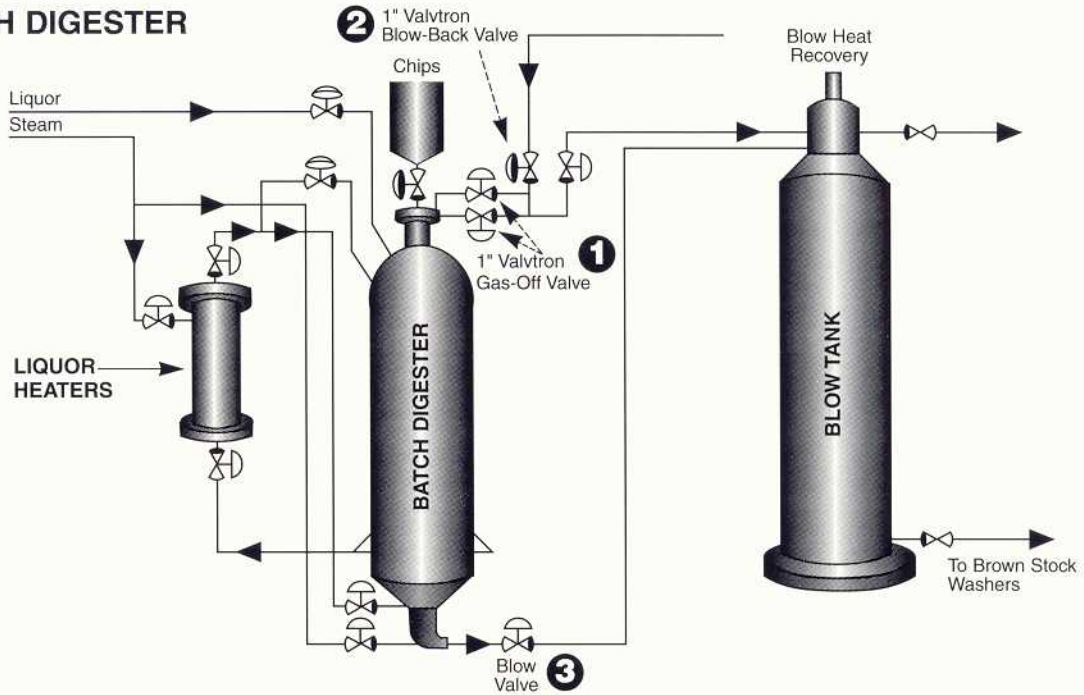


BATCH DIGESTER



Pulp and Paper Digester Valves

Valvtron valves are ideal choices for ball valve applications throughout today's pulp and paper industry. For example, the schematic above illustrates placement of Valvtron valves in blow-back and gas-off applications in a typical batch digester located on the front end of the paper mill. Here, wood chips and chemicals or 'liquors' are fed into the digester and cooked to soften and separate the lignin (the binding agent in wood). Valvtron valve's high-cycle modification, teamed with a rugged Keystone Controls actuator package, ensures a service life lasting

well beyond other standard valve designs. Additional applications for Valvtron products include digester blow valves, liquor fill and liquor recirculation service, as well as flow control throughout the pulp mill. Valvtron has also introduced valves into other areas of the mill. These include titanium valves used (since 1988) on filter feed pumps in chlorine dioxide service. In addition, the Singltron valve design is being used in steam lines in the coating kitchen.

Valvtron Metal-Seated Valves (refer to above schematic for existing or potential valve locations)

Location	Application	Conditions	Valve Size/Design	Body Material/Trim
1	Gas-Off Valve	320°F @ 135 psi	1-inch V1	316SS/Trim 20
2	Blow-Back Valve	360°F @ 135 psi	1-inch V1	CS/Trim CV
3	Blow Valve	350°F @ 135 psi	6-12-inch V1	316SS/Trim 20

*Note actual valve size and conditions may vary depending on mill design. Valvtron applications are not limited to ones shown.

Why Use Valvtron Valves for Pulp and Paper?

- Simplified construction, integral seat prevents leaks behind the seat
- Streamlined flow path reduces wear
- Patented design, with only nine parts, ensures longer life
- Metal seats for severe service provide user flexibility
- Exceeding industry standard leak tests assures customer that safety and environmental standards are met
- High bond strength coatings provide value and extended life
- Typical on-off, isolation applications:
 - Gas-off valve on batch digester
 - Blow-back valve on batch digester
 - Digester blow valve
 - Pulp stock valve
 - Green liquor or sticky/corrosive fluids
 - Slurries and scale buildup
 - Chemicals/special alloy areas
 - Steam lines

Valvtron

**9700 West Gulf Bank, Houston, Texas 77040
Phone: 713-466-1176**

www.tycoflowcontrol.com