

installation, operation and maintenance Yarway SmarTrap Electronic Monitor for the series 711/721/701-F2 disc trap (standard, HP, HC, & XHC)

INSTALLATION:

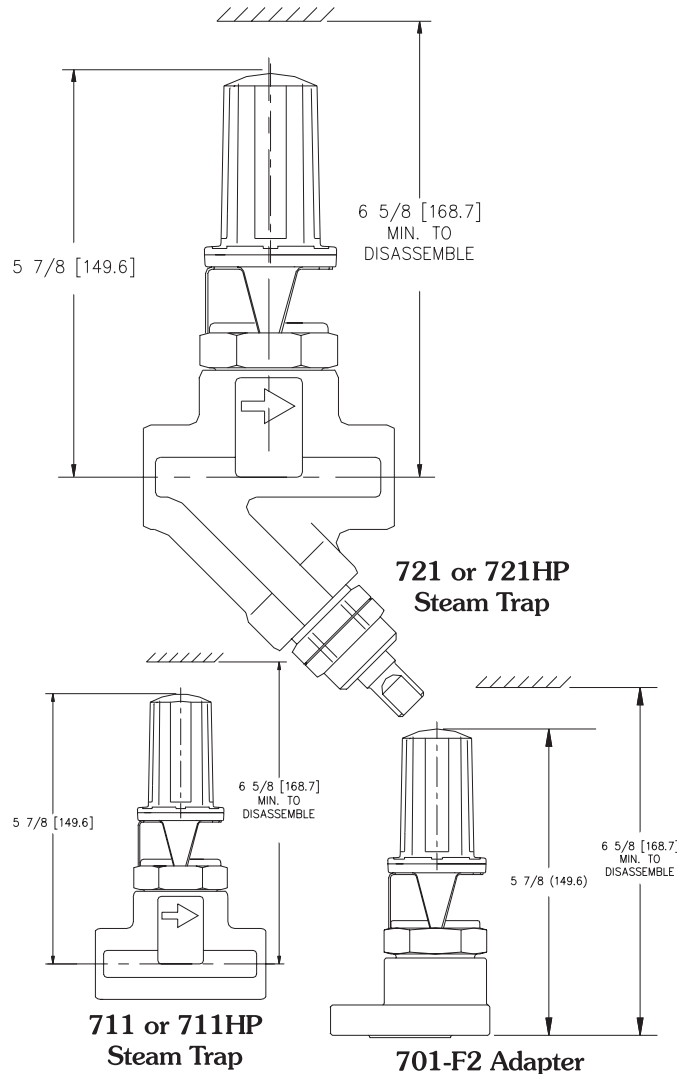
Yarway SmarTrap electronic monitor is supplied permanently attached to the top of the bonnet of the UniBody disc trap or replacement capsule. No additional installation is required.

OPERATION:

The SmarTrap monitor is a non-invasive electronic device that monitors and evaluates the condition of the Series 711/721 steam trap.

On the top of the monitor are two light emitting diodes (LED) side by side, one red and one green. Please refer to the table below for how to determine trap status from the blinking LEDs.

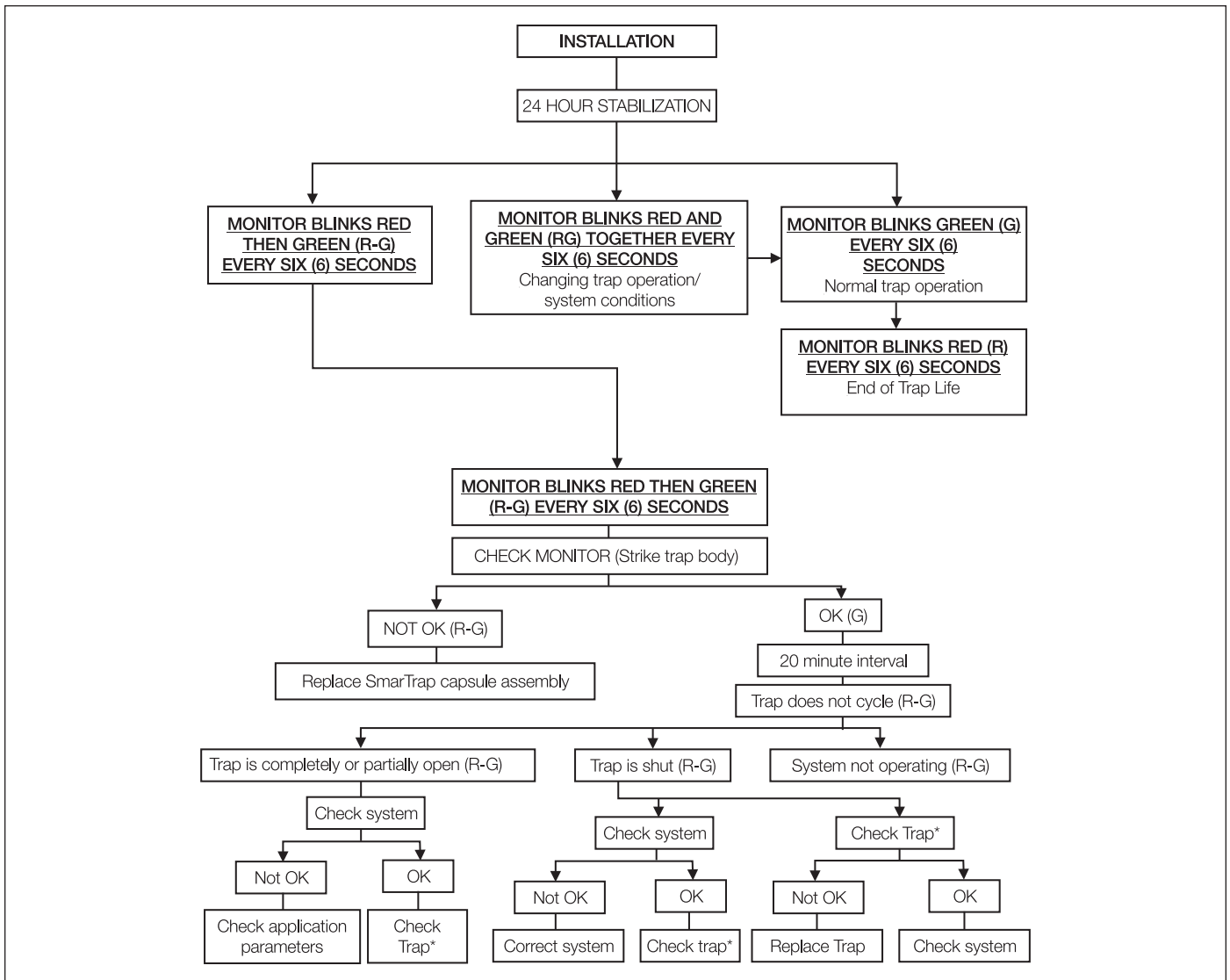
LED STATUS	DESCRIPTION OF TRAP OPERATION
GREEN (G)	<u>Normal</u> - The green LED blinks every six seconds during normal operation.
RED/GREEN SEQUENTIAL (R-G)	<u>Temporary abnormal</u> - If the trap starts cycling too fast (out of range) or too slow (such as when taken out of service) then every six seconds the red LED will blink followed 1/2 second later by a blink from the green LED.
RED/GREEN TOGETHER (RG)	<u>Establishing new baseline (learning)</u> - If there is a significant deviation from previous trap cycling rates then both LEDs will blink together every six seconds. Cycle rate variances can be due to a change in system pressure or a change in the condensate flow rate. Either can cause the trap to cycle faster or slower. When this occurs, the monitor will establish a new baseline, and then continue to monitor the trap's performance.
RED (R)	<u>Replace soon</u> - When the red LED blinks every six seconds, the trap is approaching the end of its service life due to wear and should be replaced soon.



MAINTENANCE:

Replacement of complete monitor with capsule is required since there are no serviceable components in the SmarTrap module. Do not open the housing, as it will void the warranty.

WARNING:
This device contains a lithium battery. Do not recharge, disassemble or incinerate as the battery may explode resulting in a severe burn exposure hazard.



* Use industry standard methods.

The SmarTrap is a Factory Mutual approved intrinsically safe design with the following ratings:

- Rated for indoor/outdoor (NEMA 4X) hazardous classified locations.
- Intrinsically safe for use in Class 1, 2 and 3, Division 1, Groups A, B, C, D, E, F, G.
- Intrinsically safe for Class 1, Zone O, AExia 11CT4.
- Non-incendive for Class 1, Division 2, Groups A, B, C, D.
- Suitable for Class 2 and Class 3, Division 2: Groups F, G.



www.tycoflowcontrol.com