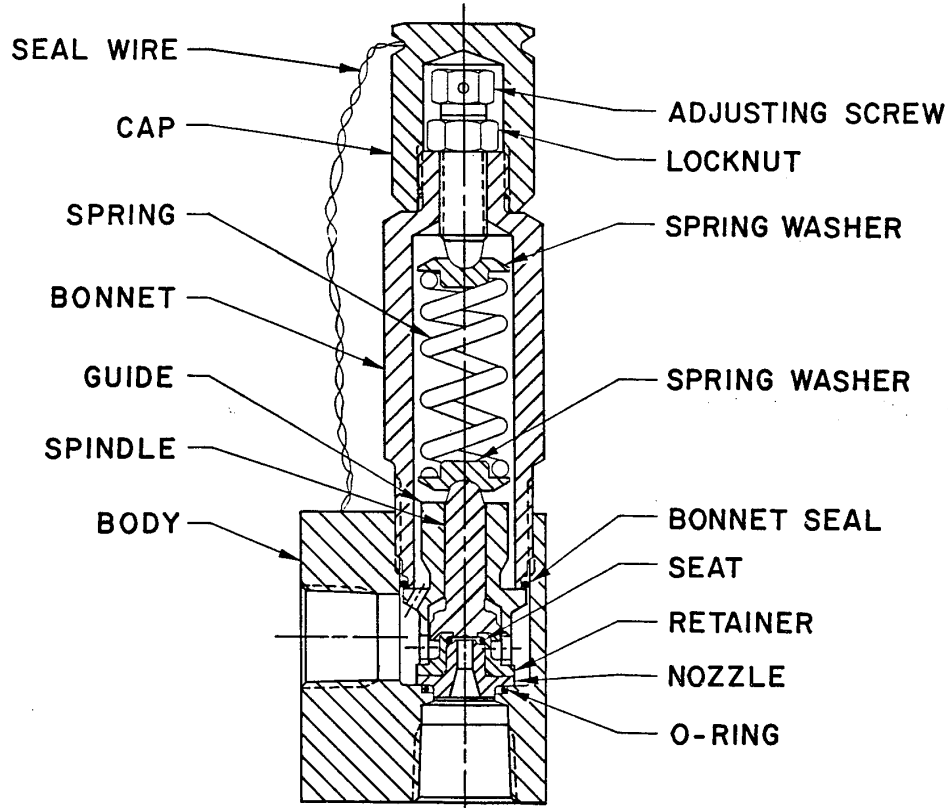


TYPE 89 SAFETY RELIEF VALVE MAINTENANCE INSTRUCTIONS



1. BREAK SEAL WIRE AND REMOVE CAP.
2. REMOVE TENSION FROM SPRING BY TURNING ADJUSTING SCREW COUNTERCLOCKWISE. UNSCREW BONNET COUNTERCLOCKWISE AND REMOVE.
3. REMOVE VALVE INTERNALS AND DISCARD ALL SEALS.
4. LUBRICATE THREADS ON PRESSURE ADJUSTMENT SCREW, BONNET, AND SPRING WASHER BEARING POINTS WITH DOW CORNING MOLYKOTE "33" OR EQUIVALENT. DO NOT LUBRICATE SEAT OR SPINDLE.
5. INSTALL NEW SEALS AND REASSEMBLE IN REVERSE ORDER OF DISASSEMBLY.
6. ADJUST SET PRESSURE AND LOCK ADJUSTING SCREW. REASSEMBLE CAP AND LOCK WIRE.

ANDERSON, GREENWOOD & CO.

3950 Greenbriar, Stafford, Texas 77477; P.O.Box 944, 77497-0944
Phone : (713)274-4400, Telex : 0775219, Fax : (713)240-1800

05-9040-106 REV. A

© 1981 ANDERSON, GREENWOOD & CO.

